

37000™ SERIES



NEW
GROOVED END
MODEL 3700V



CAST IRON PFA* FUSED BALL VALVES



www.americanvalve.com

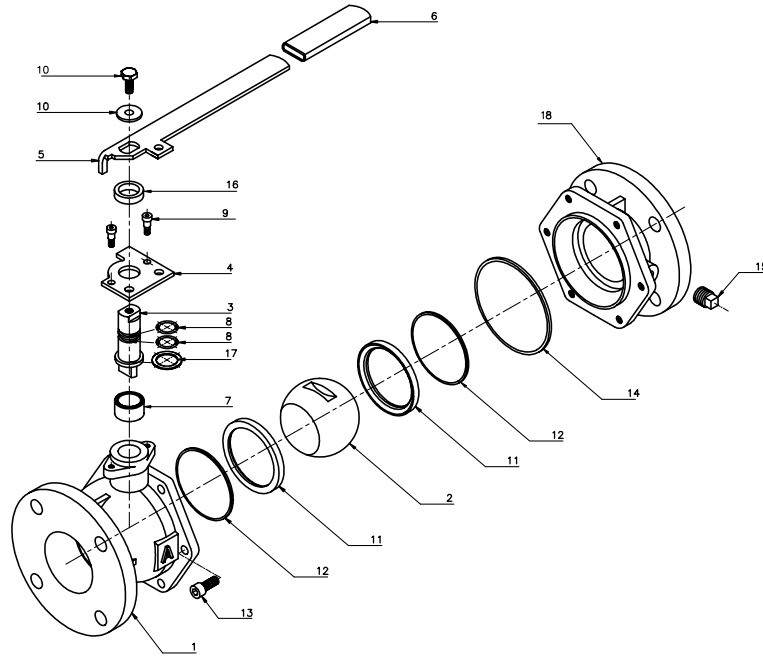
*PFA is an ingredient commonly branded as Teflon®.

MODEL 3700

Cast Iron Flanged Ball Valve

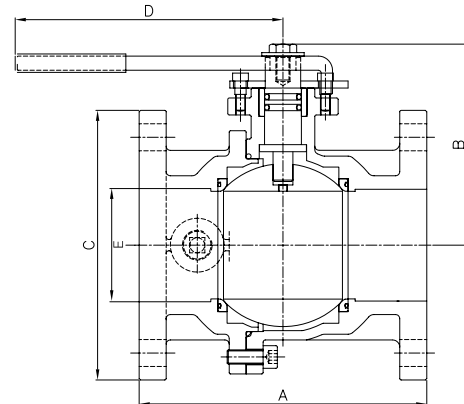


Part	Material
1 Body	Cast Iron/A126 Class B
2 Ball	Cast Iron/PFA* Fused
3 Stem	Stainless Steel
4 Stop Plate	Steel
5 Handle	Steel
6 Handle Grip	Vinyl Dipped Plastisol
7 Sleeve	Stainless Steel
8 Stem O-Ring	Nitrile Rubber (Buna-N)
9 Shoulder Screw	Steel
10 Stem Bolt/Washer	Steel
11 Seat Ring	Virgin PTFE
12 Back Seat O-Ring	Nitrile Rubber (Buna-N)
13 Socket Head Screw	Steel
14 Body Gasket	Nitrile Rubber (Buna-N)
15 Body Plug	*
16 Collar	Steel
17 Thrust Washer	PTFE
18 Body Cap	Cast Iron/A126 Class B



*2" - 4" Steel; 6", 8" Cast Iron

DIMENSIONS:		2	2½	3	4	6	8
A	Face to Face	7"	7.5"	8"	9"	10.5"	11.5"
B	Center of Port to Top	5.5"	5.22"	5.59"	6.34"	8.31"	9.76"
C	Flange Diameter	6"	7"	7.5"	9"	11"	13.5"
D	Center of Valve to Handle End	12"	10.2"	10.9"	12.6"	16.7"	19.7"
E	Port Diameter	2"	2.5"	3"	4"	6"	8"
	Bolt Holes	4	4	4	8	8	8
	Weight (lbs.)	25	30	38	62	118	199



- Certified to meet the requirements of NSF/ANSI 61 and NSF/ANSI 372
- PFA*- Fused Solid Ball
- Same end-to-end as any flanged gate or plug valve
- Tapped & plugged boss allows for venting downstream, or test port for backflow preventer
- 2" through 8" - Full Port
- Rated 200W @ 200°F
- Class VI Positive Shutoff
- 100% Lead-Free
- Low Torque
- Ideal for Liquid, Air, and Backflow applications
- Blowout Proof Stem
- Meets all State and Federal Lead-Free Laws

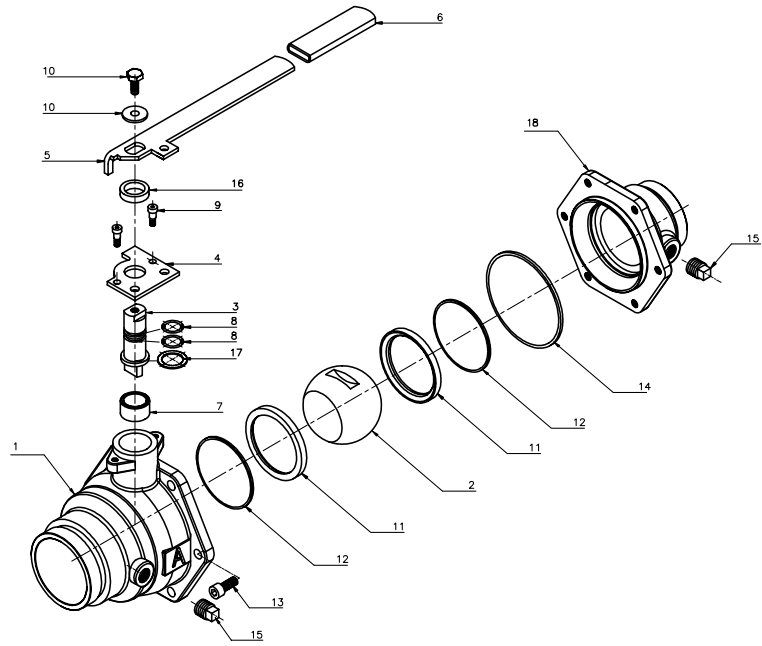
*PFA is an ingredient commonly branded as Teflon®.

MODEL 3700V

Cast Iron Grooved-End Ball Valve

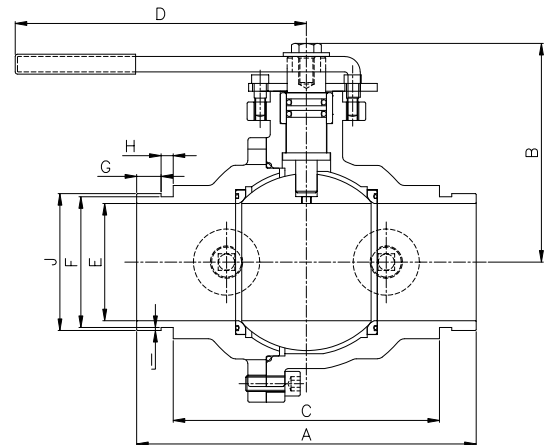


	Part	Material
1	Body	Cast Iron/A48 Class 30
2	Ball	Cast Iron/PFA* Fused
3	Stem	Stainless Steel
4	Stop Plate	Steel
5	Handle	Steel
6	Handle Grip	Vinyl Dipped Plastisol
7	Sleeve	Stainless Steel
8	Stem O-Ring	Nitrile Rubber (Buna-N)
9	Shoulder Screw	Steel
10	Stem Bolt/Washer	Steel
11	Seat	Virgin PTFE
12	Back Seat O-Ring	Nitrile Rubber (Buna-N)
13	Socket Head Screw	Steel
14	Body Gasket	Nitrile Rubber (Buna-N)
15	Body Plug	*
16	Collar	Steel
17	Thrust Washer	PTFE
18	Body Cap	Cast Iron/A48 Class 30



*2" - 4" Steel; 6" Cast Iron

DIMENSIONS:	2	2 1/2	3	4	6
A End to End	7.80"	8.64"	8.68"	9.90"	12.56"
B Center of Port to Top	4.37"	5.31"	5.59"	6.34"	8.31"
C Face to Face	5.80"	6.77"	6.81"	7.90"	10.56"
D Center of Valve to Handle End	9.29"	9.76"	9.76"	10.67"	16.79"
E Port Diameter	2"	2.50"	3"	4"	6"
F Groove Diameter	2.24"	2.72"	3.34"	4.33"	6.45"
G Gasket Seat	0.63"	0.63"	0.63"	0.63"	0.63"
H Groove Width	0.31"	0.31"	0.31"	0.37"	0.38"
I Groove Depth	0.06"	0.08"	0.08"	0.08"	0.09"
J Grooved End OD	2.37"	2.87"	3.50"	4.5"	6.63"
Weight (lbs.)	12	19	26	45	105



- Certified to meet the requirements of NSF/ANSI 61 and NSF/ANSI 372
- PFA*- Fused Solid Ball
- Double tapped & plugged bosses allow for venting or draining downstream, or test port for backflow preventer
- Full Port in All Sizes
- Rated 200W @ 200°F
- Class VI Positive Shutoff
- 100% Lead-Free
- Low Torque
- Ideal for Liquid, Air, and Backflow applications
- Blowout Proof Stem
- Meets all State and Federal Lead-Free Laws

*PFA is an ingredient commonly branded as Teflon®.



Industry-Leading Innovation

American Valve's **3700 Series™** provides the best alternative to gate valves, exactly matching their end-to-end and flanged dimensions. **3700 Series™** valves also provide superior performance to butterfly and plug valves.

Unlike gate, plug, and butterfly valves, **3700 Series™** valves are designed to maintain a bubble-tight shut off that exceeds ANSI Class VI for many years, even if the valve has not been operated or maintained regularly.

The **3700 Series™** valves are certified to meet the requirements of NSF/ANSI 61 and NSF/ANSI 372. All **3700 Series™** valves are rated at 200 psig @ 200°F, and are full port in all sizes.

3700 Series™ features PFA* seats. It should not be used in steam, oil, or flammable gas applications, but is ideally suited for potable water, wastewater, or other liquids and compressed air.

3700 Series™ has no bronze parts, which contain lead. As regulatory agencies continue to reduce the allowable lead content of components in our drinking water supply, **3700 Series™** offers a safe alternative to IBBM gate valves and bronze disc butterfly valves. **3700 Series™** also features a VOC-free coating.

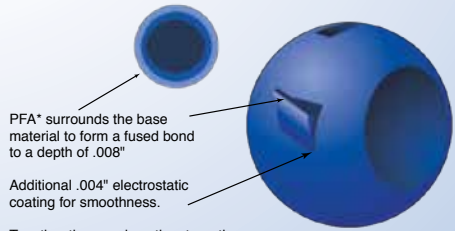
3700 Series™ valves are bi-directional; flow may go in either direction. They may be mounted horizontally, vertically, or at an angle.

3700 Series™ can be locked in either the open or closed position. 2" square operating nuts are available for underground service or hard-to-reach installations. Gear operators and actuators are available with our **4000 Series™** ball valve.

3700 Series™ features the fusion process developed by American Valve over 10 years ago.

This feature eliminates ball pitting, prevents build-up, lowers torque, and stops premature valve failure.

Since the PFA* is actually impregnated .008" into the metal, it can't wear, chip, or flake.



Together they produce the strength of steel with the corrosion resistance of PFA*. Our patented process has gained the best of both worlds...**Strength, Lubricity, and Bonding.**

*PFA is an ingredient commonly branded as Teflon®

GATE VALVE COMPARISON

Typical Gate Valve	3700 Series™
Class IV Allowable Leak-Rate	Positive Shutoff - Exceeds Class VI
Same End-to-End Dimensions as Model 3700 (ANSI B16.10)	Same End-to-End Dimensions as Class 125 or 150 Gate Valve (ANSI B16.10) or Plug Valve
Unprotected Metal Gate Notorious as a magnet for buildup and mineral deposits, making full shutoff impossible. Should come with a cheater bar	PFA*-Fused Ball Prevents Calcium, Lime, or any other buildup common in water applications, which often leads to premature valve failure
Heavy & Awkward - Requires "Big Joe" to Install · Typical 3" Gate Valve = 72 lbs. · Typical 6" Gate Valve = 197 lbs.	Lightweight & Compact - Easy to Install · 3" 3700 = 35 lbs. · 6" 3700 = 113 lbs.
Contains Bronze parts ...which contain Lead . (Lead has been shown to cause birth defects and damage to the nervous system- even in small doses)	100% Lead-Free -No bronze parts -No VOC's Certified to meet the requirements of NSF/ANSI 61 and NSF/ANSI 372